

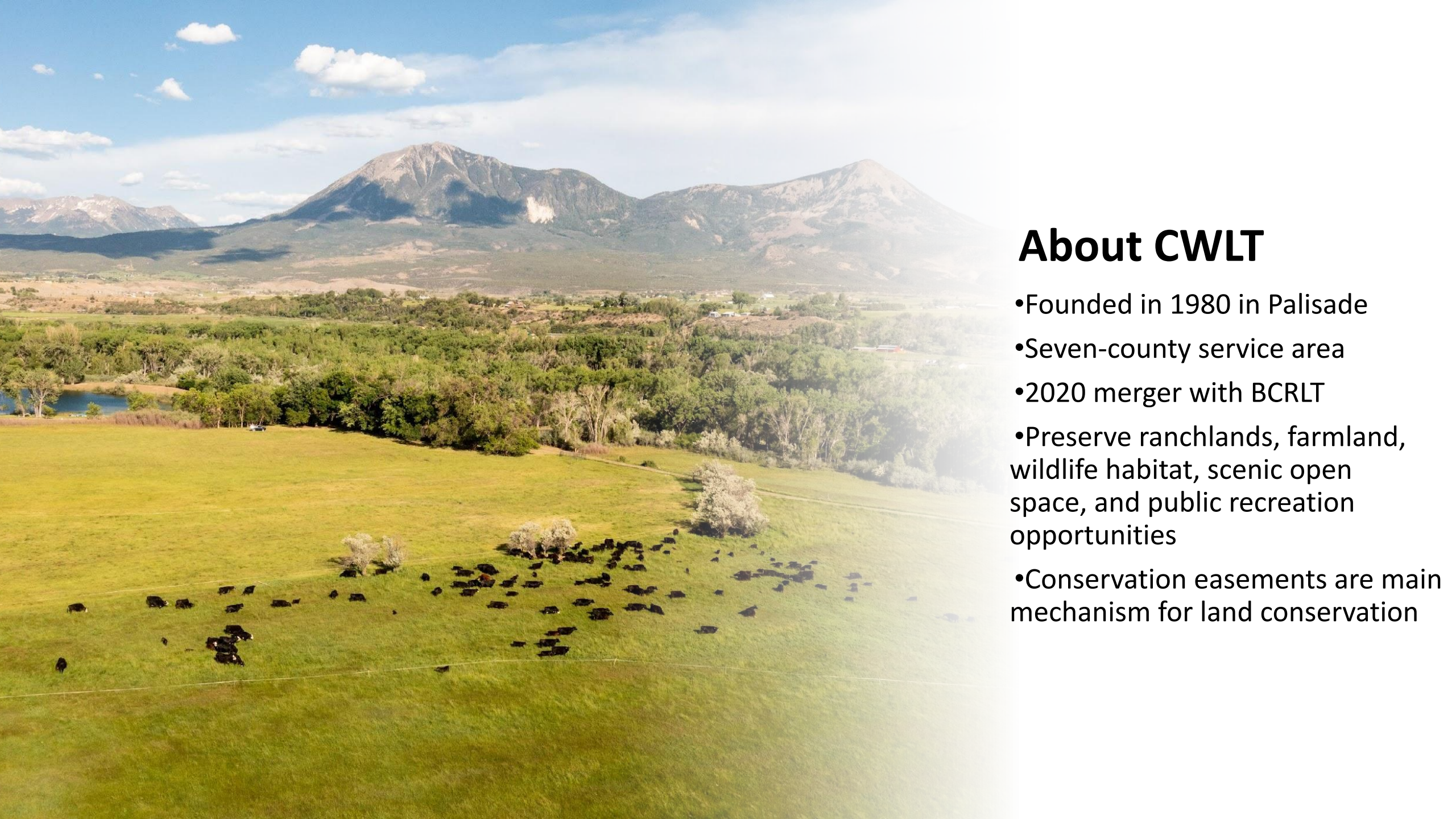


# COLORADO WEST LAND TRUST

Conserving Land. Connecting People. Enriching Lives.

David Varner, Conservation Manager





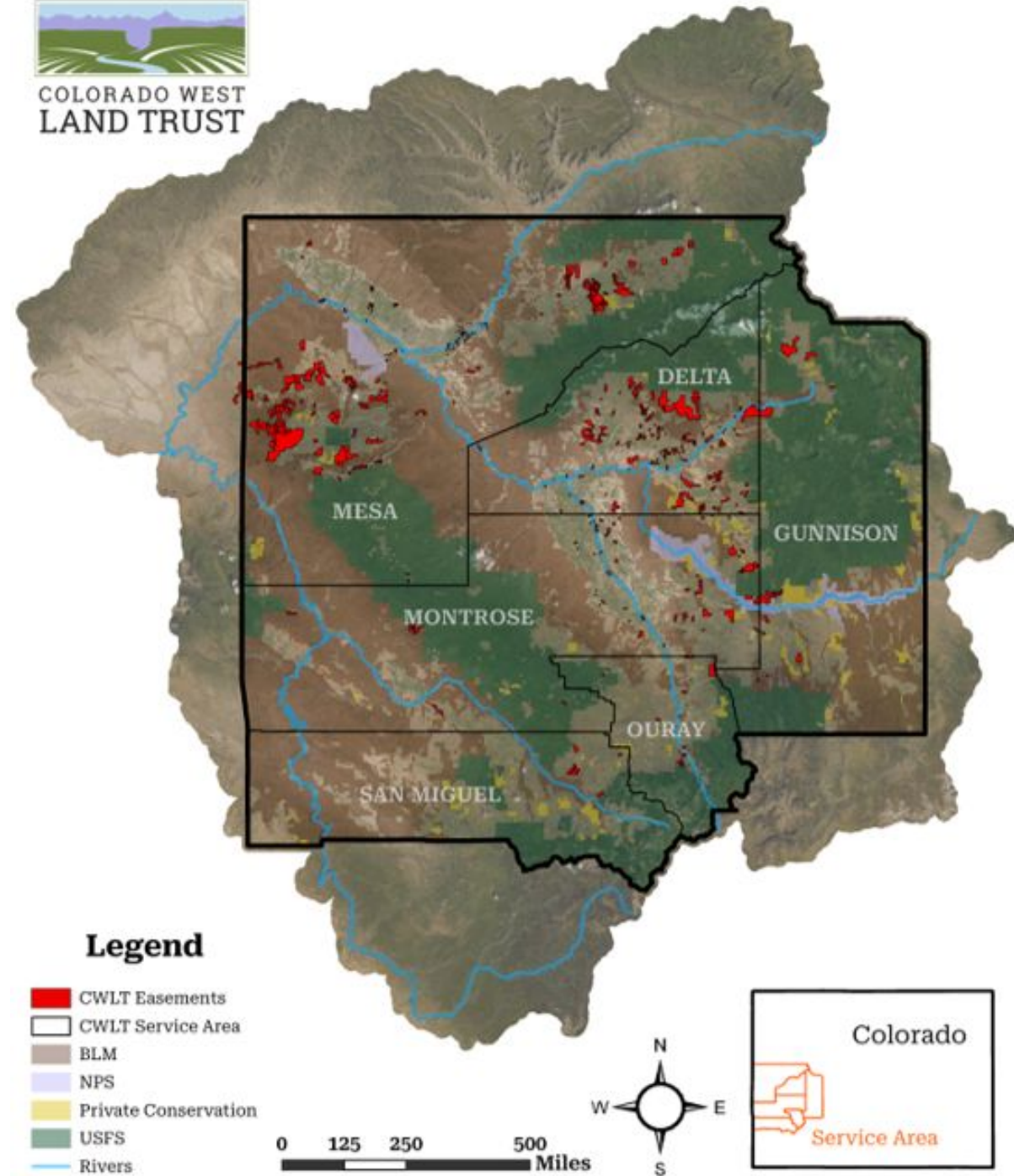
## About CWLT

- Founded in 1980 in Palisade
- Seven-county service area
- 2020 merger with BCRLT
- Preserve ranchlands, farmland, wildlife habitat, scenic open space, and public recreation opportunities
- Conservation easements are main mechanism for land conservation



# CWLT by the Numbers

- 131,500+ acres conserved
- 200+ square miles of land
- 600+ conservation easements
  - 16,000+ irrigated acres
  - 2,500 acres of fruit land
  - 7,400 acres along streams & rivers
  - 114,000 acres winter habitat for big game





# Land Conservation





# Conservation Easement Monitoring

---

- 600 conservation easements  
131,500+ acres across 7 counties
- Reserved rights, Easement  
interpretation
- Fostering healthy relationships  
with landowners







## Restoration & Resilience

Goal: to work with landowners to make CWLT conserved properties ecologically robust such that they have higher biodiversity values, greater water holding capacity, and are generally more resilient to environmental extremes



# Restoration & Resilience

- Wildlife habitat enhancements
- Riparian and floodplain restoration
- Wildfire mitigation
- Field and pasture restoration
- Regenerative agriculture







---

## Interventions

- Wildlife Forage Improvements
- Fence Removal/Conversion- Wildlife Friendly Fencing
- Wetland and Stream Restoration
  - Invasive Vegetation Removal
  - Hydrologic Structures (Beaver Dam Analogues)
  - Wet Meadow Restoration in Gunnison Sage Grouse Habitat
- Dry Conifer Forest (PJ) Upland Forest Restoration
- Sage Grouse, Sagebrush Rangelands, and Ungulate Grazing Habitat
- Wildfire Mitigation

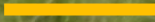


# Fence Removal/Conversion- Wildlife Friendly Fencing





# Process-Based Restoration





# Wetland and Stream Restoration: Invasive Vegetation Removal





# Wetland and Stream Restoration: Hydrologic Structures (Beaver Dam Analogues)





# Wetland and Stream Restoration: Hydrologic Structures (Beaver Dam Analogues)





# Wetland and Stream Restoration: Wet Meadow Restoration in Gunnison Sage Grouse Habitat





# Wetland and Stream Restoration: Wet Meadow Restoration in Gunnison Sage Grouse Habitat















**MOULTRIE**

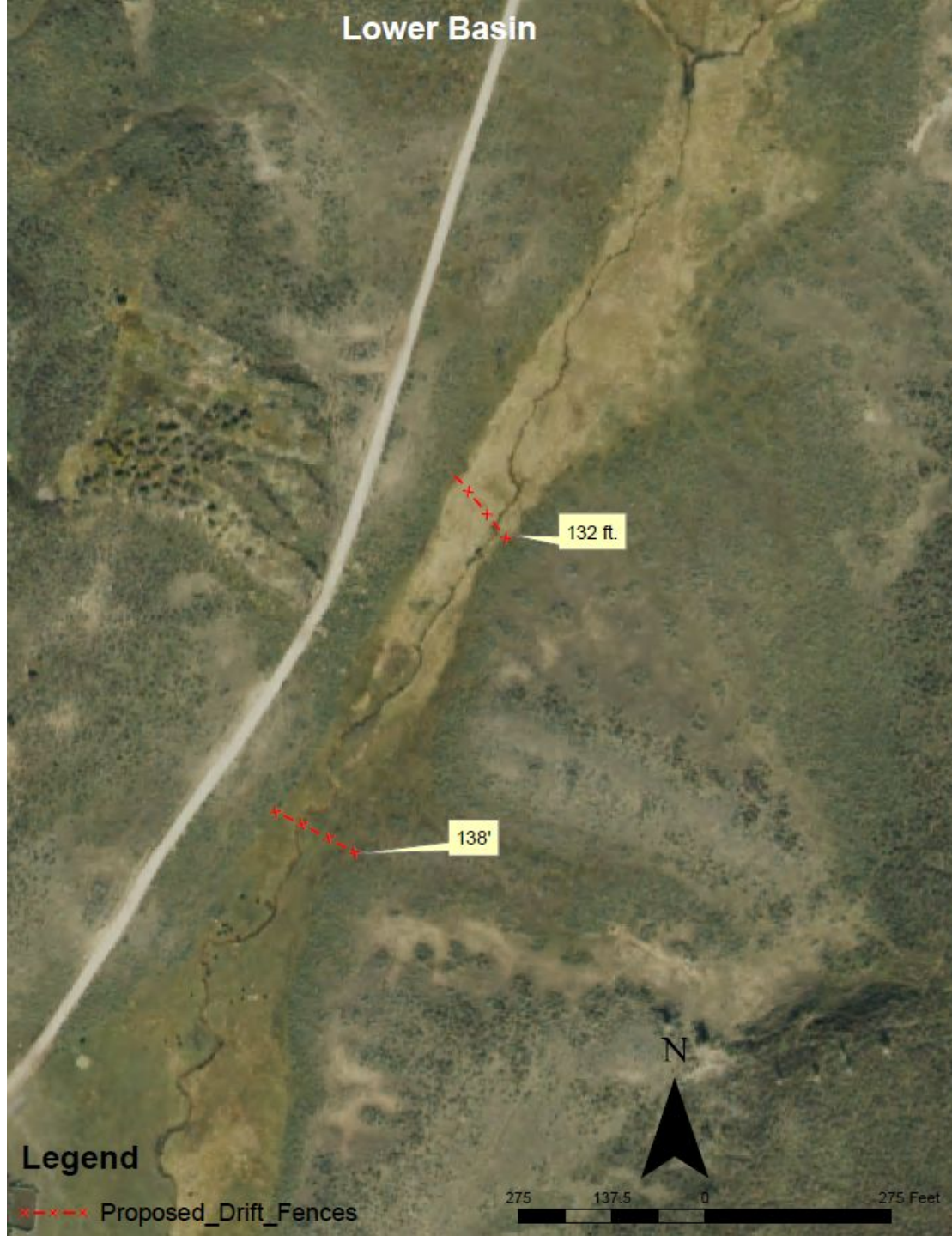
☾ 16°C

MOULTRIECAM

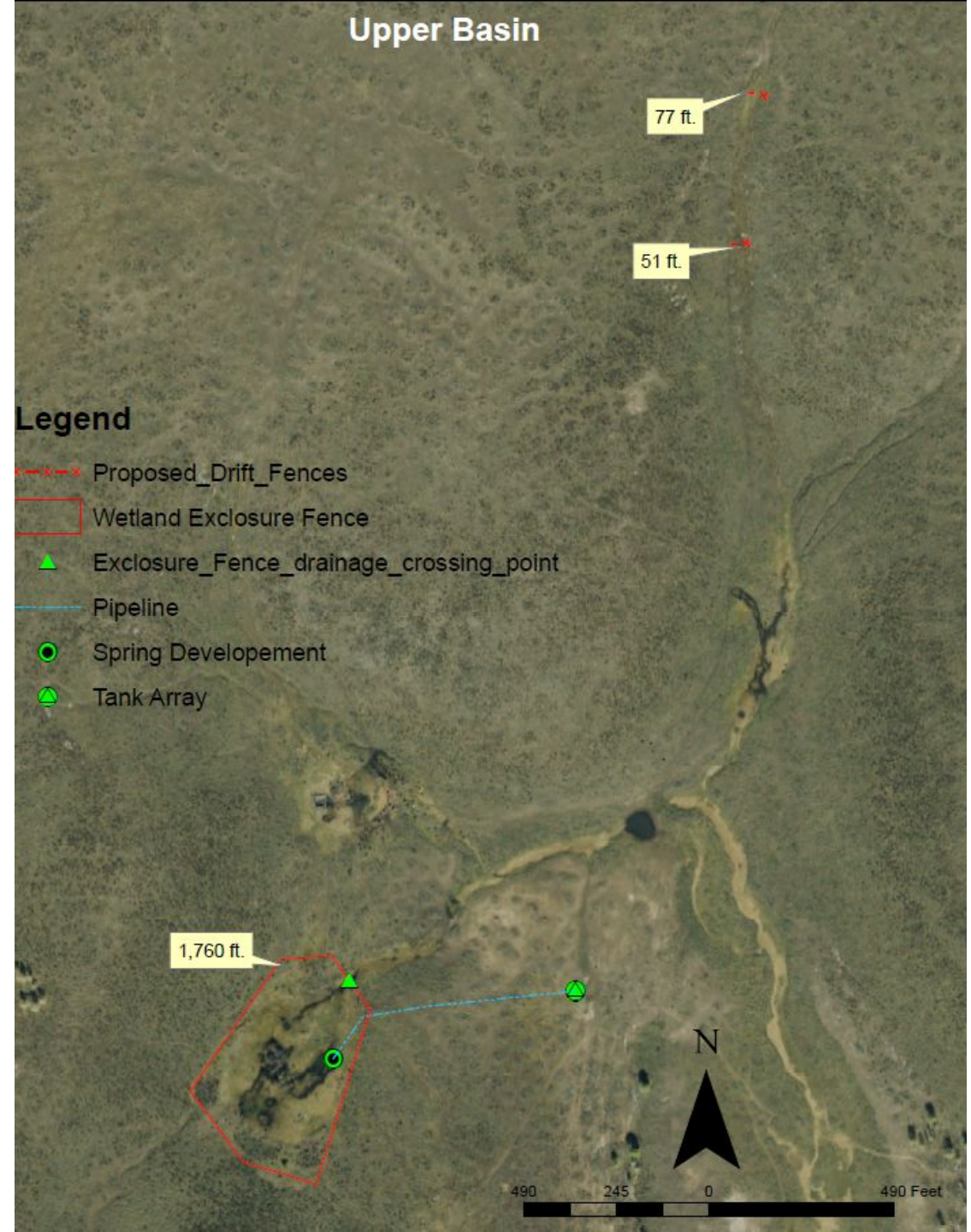
04 JUN 2022 08:32 pm



# Lower Basin



# Upper Basin











**COLORADO WEST  
LAND TRUST**

**Thank You!**

**David Varner**

**[david@cowestlandtrust.org](mailto:david@cowestlandtrust.org)**