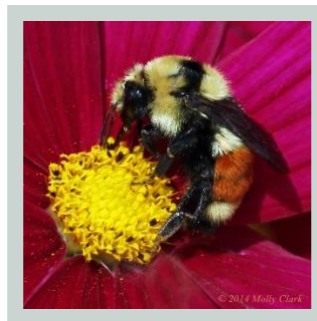
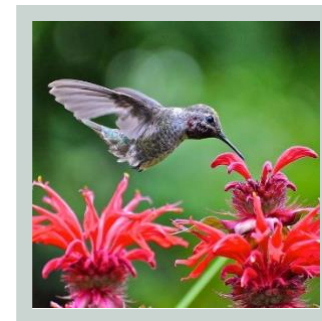
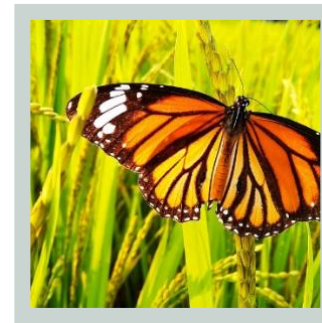


Bird-Friendly Garden

Designs Part Sun Home



Ideal design for suburban residents with under-utilized lawn space

Part Sun Home



Rocky Mountain Penstemon



Lupine



Aspen Daisy



Black Eyed Susan



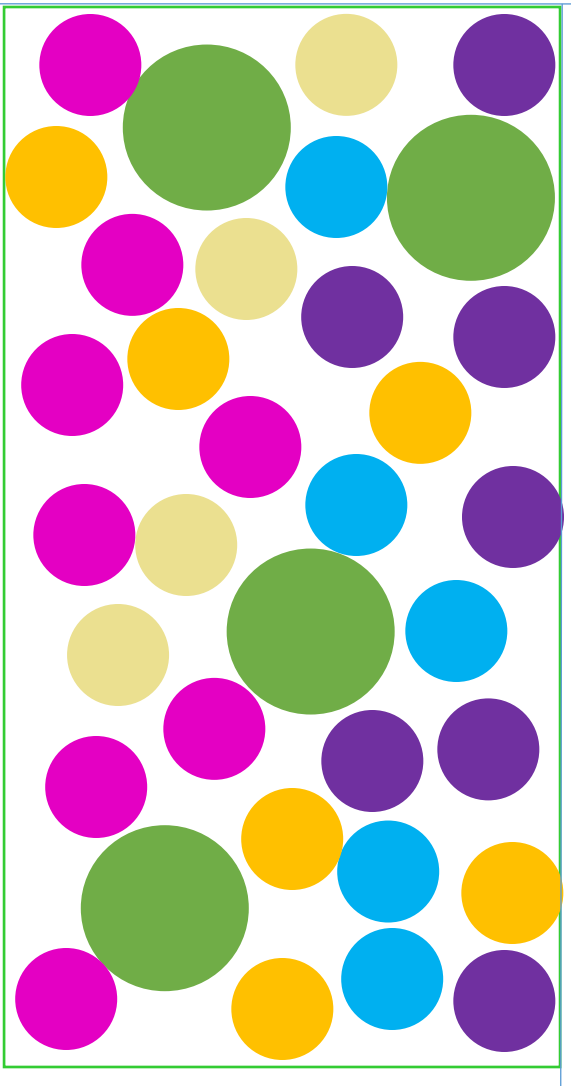
Desert Four O'clock



Big Bluestem

14 ft.

7 ft.



PLANTS



Rocky Mountain Penstemon (*Penstemon strictus*)

May attract butterflies, native bees, honeybees, bumblebees, hummingbirds

Black Eyed Susan (*Rudbeckia hirta*)

May attract nuthatches, finches, Black-capped chickadees, native bees, honeybees, predatory wasps, butterflies, skippers, moths, flies, beetles, ...



Lupine (*Lupinus*

argenteus)
May attract butterflies, native bees, honeybees, bumblebees, hummingbirds, cardinals, chickadees, jays, mockingbirds, nuthatches, orioles, sparrows, thrushes, vireos, waxwings, warblers, wrens



Desert Four O'clock (*Mirabilis multiflora*)

May attract primarily hawkmoths, as well as other nocturnal insects, bees, hummingbirds, and quail



Aspen Daisy (*Erigeron speciosus*)

May attract butterflies, native bees, honeybees, bumblebees, mockingbirds, orioles, sparrows, vireos, waxwings, warblers



Big Bluestem (*Andropogon gerardi*)

May attract chickadees, jays, woodpeckers, sparrows, nuthatches, finches, and cardinals



HOW TO

Easy as 1, 2, 3, BEE!

1. PLANT

- Place seeds one inch below nutrient rich, moist soil in formation as shown in map on back of brochure. For Zone 5, plant the seeds when the soil temperature reaches 60-70 degrees Fahrenheit (usually early May).
- Some plants will grow better if seeds are sown indoors first or if the plant is already established so be sure to check instructions on seed packets.

2. FEED

- Be sure the plants are exposed to full or partial sunlight most of the day.
- Keep soil moist until germination. Water only when soil looks dry. Watering is minimal after germination so do not overwater.
- Fertilizer is not necessary as these plants thrive in this eco-region.

3. MAINTAIN

- Flowers will bloom at different times of the growing season.
- Maintenance should be minimal.
- Allow brush piles to form in between plants for habitat and foraging purposes.

4. BEE

- Sit back and enjoy watching birds, pollinators, and other wildlife take advantage of your bright blooms.
- Pat yourself on the back for being an environmentally aware and sustainable leader in your community.

All information on pollinators and birds was taken from USDA and National Audubon Society databases.

This landscape design is suited for partial sun and dry conditions in prairie and foothills ecoregions. These plants are water-wise and range in diversity of color, bloom time and height.

One of the biggest threats birds face is habitat loss. Planting native plants is a simple but powerful way to help birds. Native gardens not only provide food and shelter for, they also conserve water and eliminate chemical fertilizers and pesticides.

Audubon Rockies's Habitat Hero program provides people, businesses, and cities with the resources to create bird habitat in their own communities.

Learn how you can plant a better world for birds and people at rockies.audubon.org/habitat-hero.