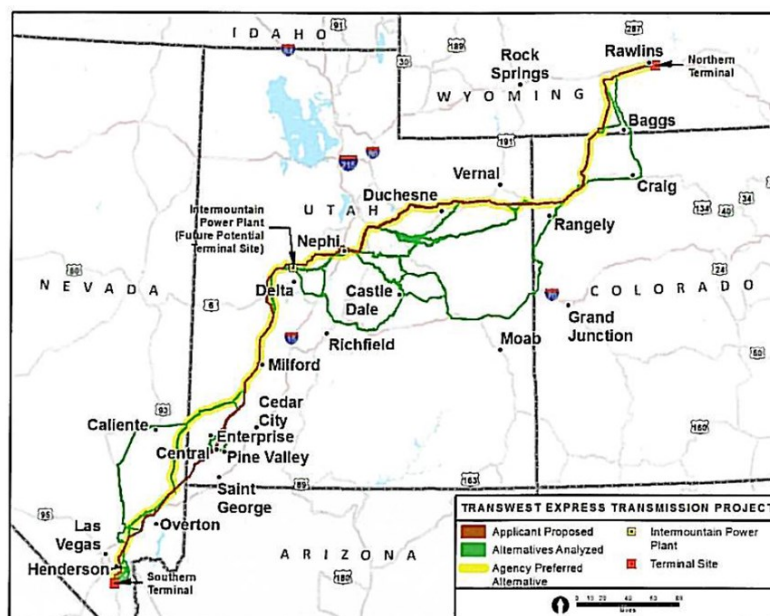


# TransWest Express Transmission Project: Proposed Solutions for Avoiding & Minimizing Impacts

## About the Proposed Project

TransWest Express is a high voltage, direct current transmission line that would bring primarily wind energy from Wyoming to the desert southwest.

- Proposed by an affiliate of The Anschutz Corporation
- Route for the 600 kilovolt line would traverse WY, CO, UT, NV
- Approximately 725 miles in length
- Right-of-way width up to 300 feet
- Deliver up to 3,000 megawatts of energy to populated metropolitan areas in CA, AZ, NV
- Transmission structure heights would vary from 100 to 180 feet
- Final Environmental Impact Statement expected in April 2015, Record of Decision in September 2015



Map source: Bureau of Land Management (Nov. 2014)

## Transmission and Renewable Energy

Some new transmission lines are needed to support renewable energy development; a smart approach to development that protects wildlands and wildlife habitat is crucial for success.

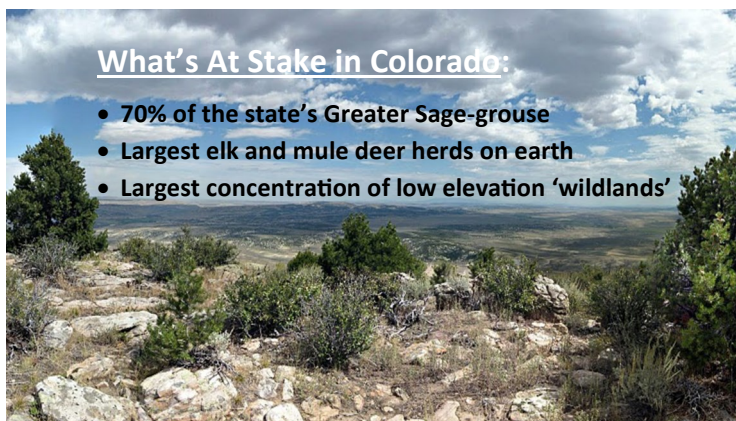
## Anticipated Impacts in NW Colorado

This proposed transmission project, as noted in BLM's own documents, is expected to have impacts to Greater Sage-grouse habitat, Lands with Wilderness Characteristics, prized big game hunting areas and other protected resources.



### What's At Stake in Colorado:

- 70% of the state's Greater Sage-grouse
- Largest elk and mule deer herds on earth
- Largest concentration of low elevation 'wildlands'



# Proposed Solutions for Avoiding & Minimizing Impacts

## Impacts to Wildlife and Wildlands



**Greater Sage-Grouse:** Proposed corridors fall within state and federally designated Preliminary Priority Habitat for grouse, as well as conservation easements obtained by the State of Colorado. This region, which includes BLM's Little Snake and White River Field Offices, contains over 70% of Colorado's grouse.

**Impacts:** Direct habitat loss, reduced habitat quality, substantial behavioral impacts, increased vulnerability to predation. All these could detrimentally impact state and federal conservation efforts.

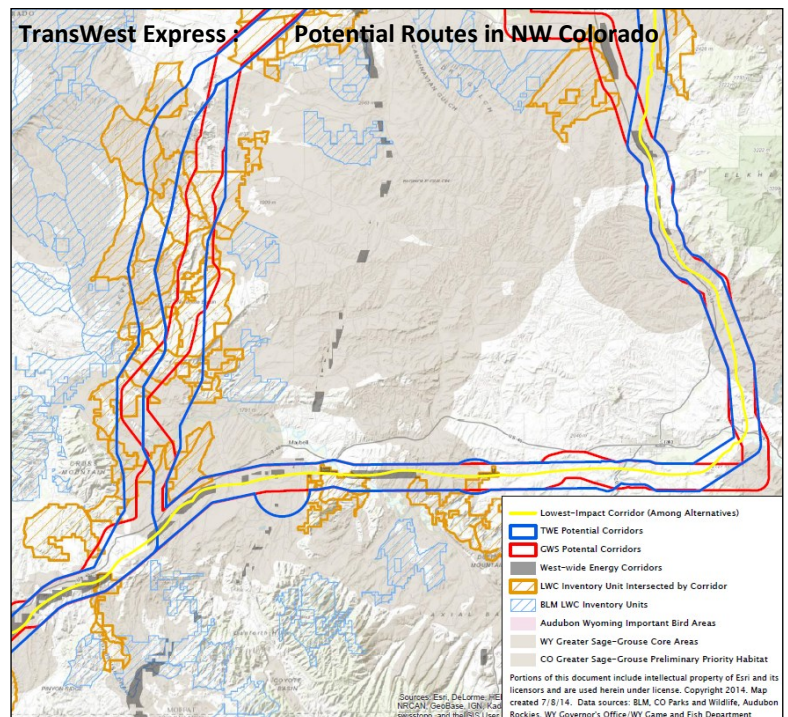
### Lands with Wilderness Characteristics:

The 2-mile corridor analyzed for the agency-preferred and applicant-proposed routes would intersect at least 14 areas which BLM has inventoried and found to have wilderness characteristics. In contrast, the alternative, much lower impact route along West-wide Energy Corridors would intersect only 3 areas with wilderness characteristics.

## ... Other Transmission Lines

**Gateway South**, a high voltage transmission line proposed by PacifiCorp, is also under review. The Final EIS is expected in Sept 2015. Proposed routes through NW Colorado are nearly the same as for TransWest Express. Adding another major transmission would undoubtedly increase impacts.

**Zephyr**, another high voltage line proposed through NW Colorado, is expected to begin permitting soon.



## Two Potential Solutions to these Challenges

- 1) **Rather than traverse undeveloped lands, select the lowest impact route** (yellow in map above) which follows existing highways (HWY 13/40), transmission lines, and BLM's West-wide Energy Corridors.
- 2) **Mitigate impacts by protecting other public lands in the region.** BLM has mitigation policies that should be used to mitigate, or offset unavoidable impacts from these projects.



### For More Information:

**Luke Schafer**  
Conservation Colorado  
luke@conservationco.org

**Alex Daue**  
The Wilderness Society  
alex\_daue@tw.s.org

**Daly Edmunds**  
Audubon Rockies  
dedmunds@audubon.org